



## Discovery Custom Homes "The Timber Ridge"



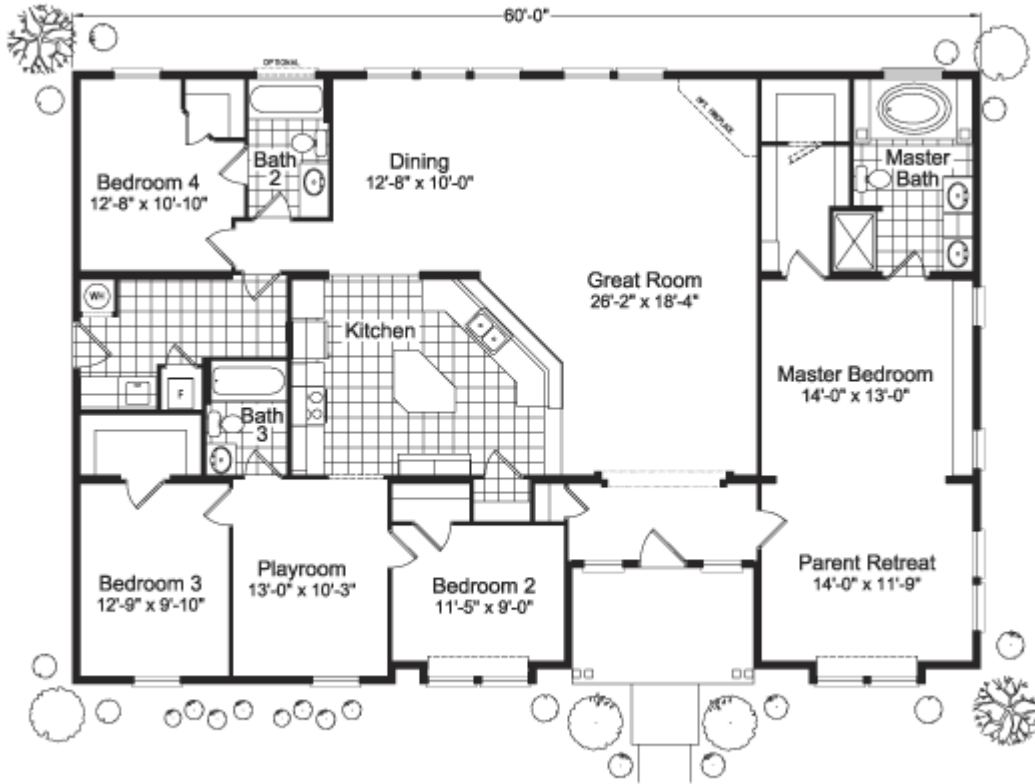
### Size & Information:

Square Footage:	2,311
Bedrooms:	4
Bathrooms:	3
Stories:	1
Living Areas:	3
Dining Areas:	1
Dimensions:	60'X40'

### Model Features:

- Hugely popular floor plan with kitchen serving bar and a wide open feel
- Playroom and Retreat or optional 5<sup>th</sup>/6<sup>th</sup> bedroom
- Spacious country kitchen with island and plenty of storage
- Master bedroom includes large walk-in closet with extra hidden closet
- Earth Advantage Green Building Specifications – Standard

# Floor Plan



Kitchen with Bar



Master Bedroom



Note\*\*\*

- Some upgrades shown.
- Subject to slight modifications and California building code changes as required.

#### 🏠Energy efficiency

At minimum, an Earth Advantage home is designed to improve energy efficiency by 15 percent over a conventionally built home. The incorporation of products such as energy-efficient windows, appliances, mechanical systems and light fixtures can add up to lower energy usage and greater comfort year round.\*

#### 🏠Indoor air quality

The air inside your home makes a difference in how you feel every day, and indoor air quality is a high priority in the construction of an Earth Advantage home. With options like air filtration systems, controlled ventilation and low-toxic building materials, an Earth Advantage home may allow you to breathe a little easier.

#### 🏠Environmental responsibility

The same building materials in an Earth Advantage home that improve indoor air quality also contribute to a cleaner environment, as less toxic products reduce atmospheric pollutants. Earth Advantage homes may also employ site measures that minimize environmental impact such as recycling job site waste, preserving topsoil and trees, and adding native plants to the landscape.

#### 🏠Resource Efficiency

Highly efficient appliances save energy and conserve our region's resources. Many items can be made with a high-recycled content, such as carpet crafted from plastic pop bottles, ceramic tile, paint and insulation. Flooring made from bamboo can make a big difference by minimizing the use of timber. Ask us what materials have great environmental performance and long-term value.

For more information in northern California, call us at (877) 314-4945 or email us at [NorthernCalifornia@cuttingedgehomes.net](mailto:NorthernCalifornia@cuttingedgehomes.net)

Corporate office:

Cutting Edge Homes Inc.

<http://www.cuttingedgehomes.net>

office line (877) 280-6496